

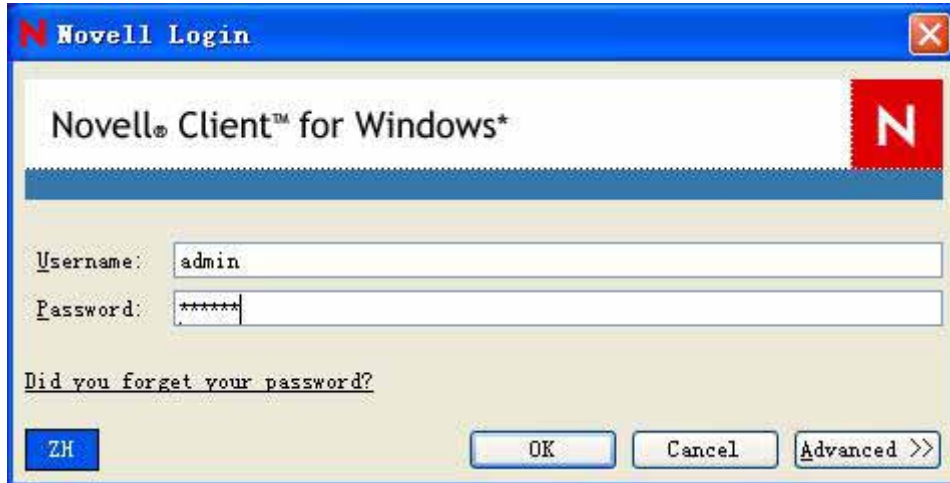
BeyondLSI LSM Installation Guide

Install BeyondLSI Login Method for use in Novell eDirectory

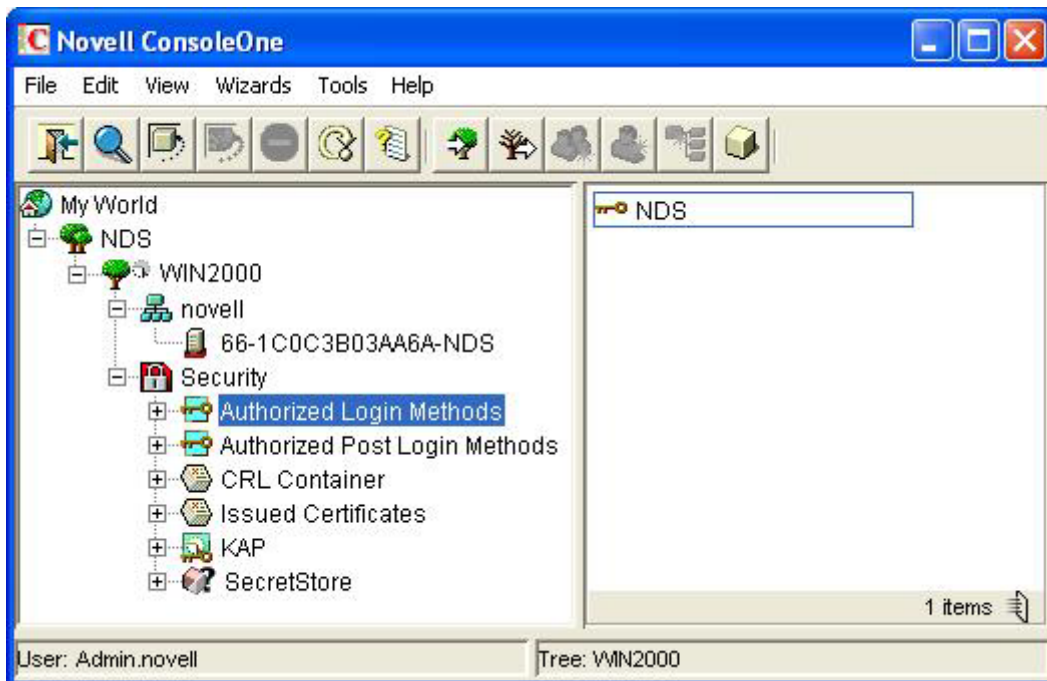
If you have installed **BeyondLSI NMAS Client 1.2**.

You can use ConsoleOne to install the BeyondLSI Login Method into eDirectory

1. Login to the eDirectory tree as an administrator or a user with administrative rights.

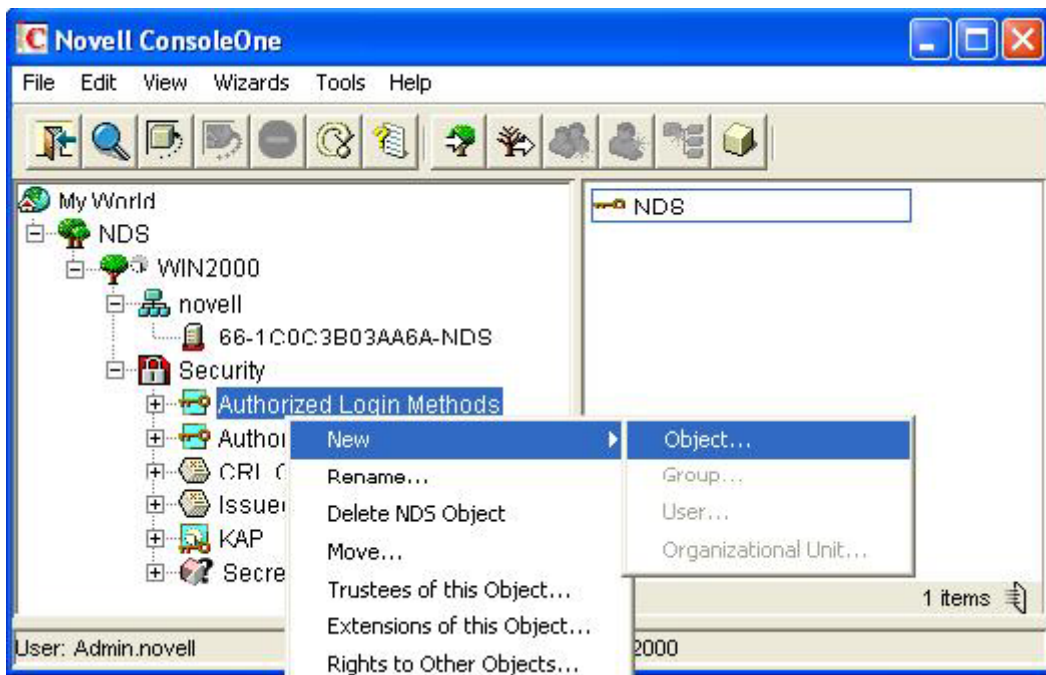


2. Start ConsoleOne, select the Security container in ConsoleOne.



3. Right-click the Authorized Login Methods container.

4. Click New, then click Object.
The New Object Wizard starts.



5. Select the SAS:NMAS Login Method object class, then click OK.



6. Specify the configuration file, then click Next.

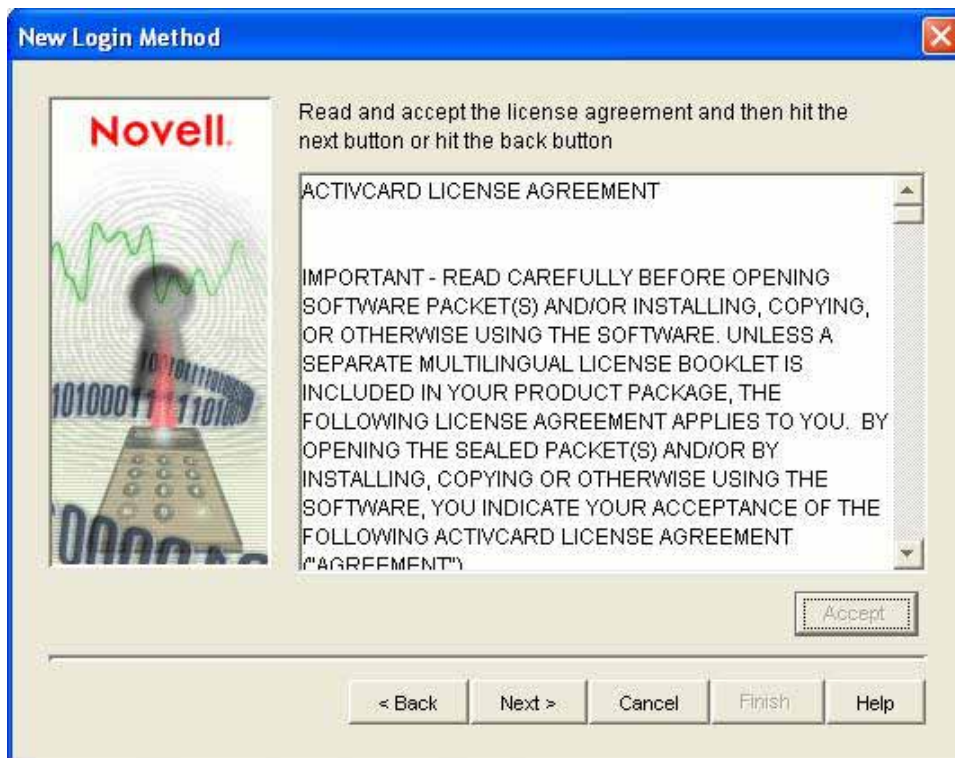
The configuration file is located in the login method folder and is named config.txt.



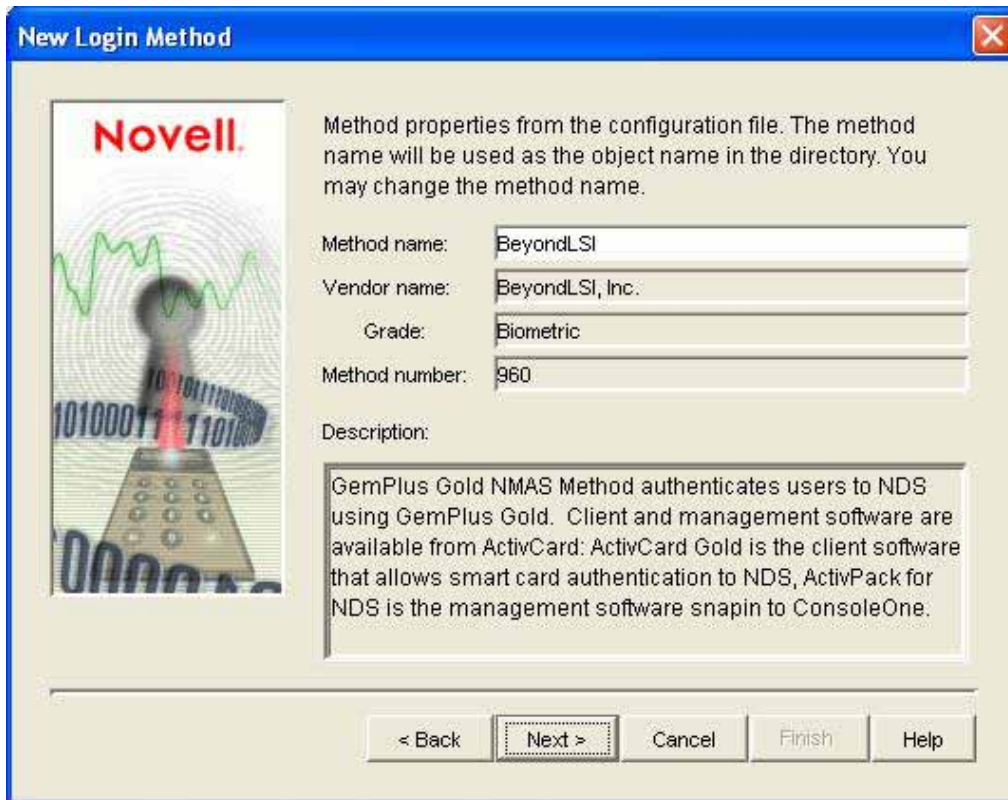
default folder in BeyondLSI NMAS Client 1.2 is

C:\ProgramFiles\BeyondLSI\BeyondLSI NMAS Client 1.2\beyonddsi_nmas_client_1.2\method

7. On the license agreement page, click Accept, then click Next.



8. Accept the default method name, then click Next.



The screenshot shows a 'New Login Method' dialog box with a blue title bar and a close button. On the left is a Novell logo and a graphic of a fingerprint scanner. The main area contains the following text and fields:

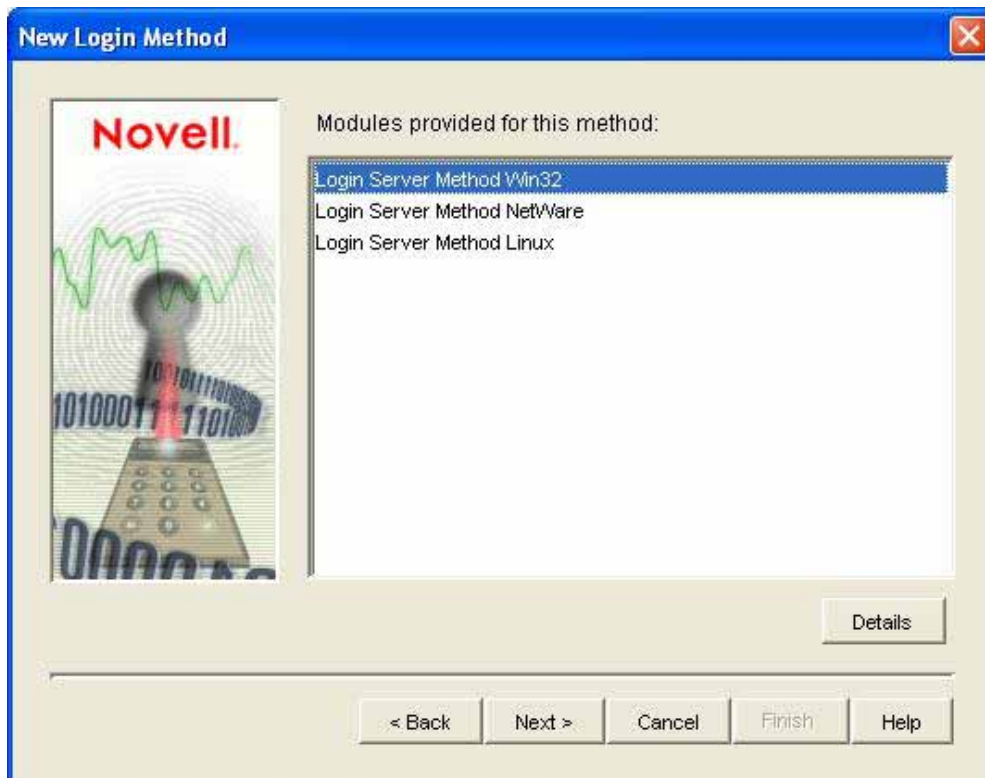
Method properties from the configuration file. The method name will be used as the object name in the directory. You may change the method name.

Method name: BeyondLSI
Vendor name: BeyondLSI, Inc.
Grade: Biometric
Method number: 960

Description:
GemPlus Gold NMAS Method authenticates users to NDS using GemPlus Gold. Client and management software are available from ActivCard: ActivCard Gold is the client software that allows smart card authentication to NDS, ActivPack for NDS is the management software snapin to ConsoleOne.

At the bottom are buttons: < Back, Next >, Cancel, Finish, and Help.

9. Review the available modules for this method, then click Next.



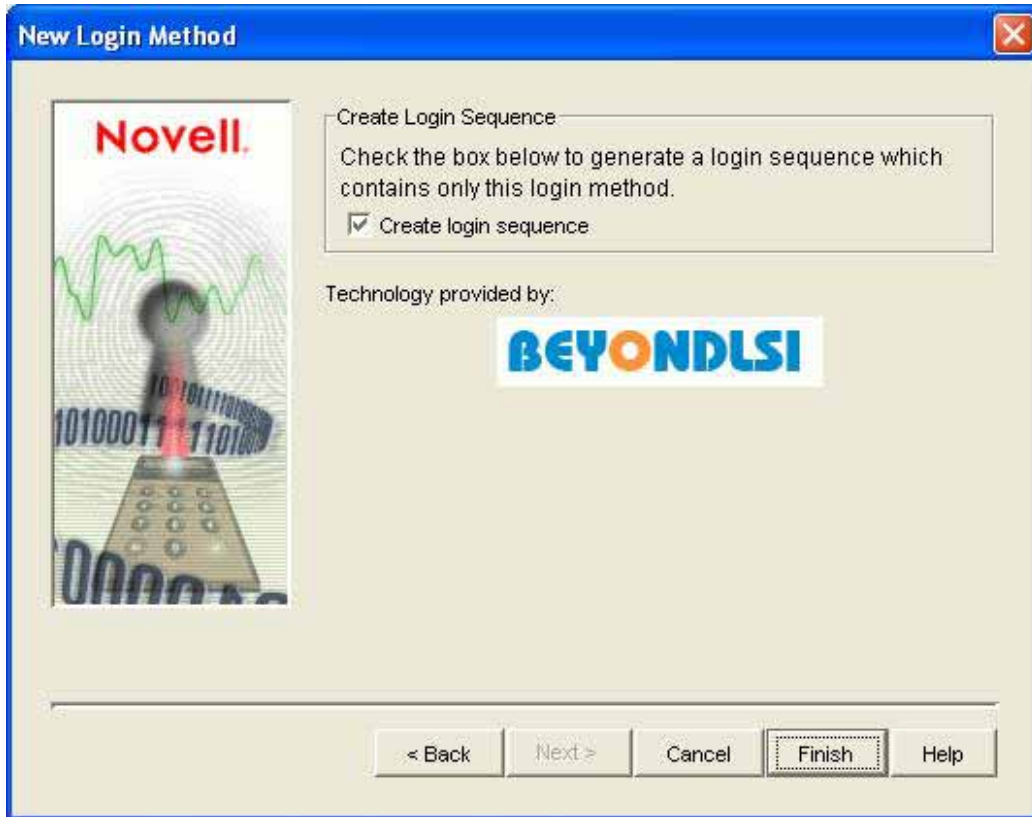
The screenshot shows the same 'New Login Method' dialog box, but now displaying a list of modules provided for this method:

Modules provided for this method:

- Login Server Method Win32
- Login Server Method NetWare
- Login Server Method Linux

A 'Details' button is located at the bottom right of the list area. The bottom navigation buttons are: < Back, Next >, Cancel, Finish, and Help.

10. If you want a login sequence to use only this login method, check the appropriate check box, then click Finish.



11. Review the installation summary, then click OK.
12. If necessary, close and restart ConsoleOne to run the newly installed ConsoleOne snap-ins provided by the login method to configure the login and enroll users to use this login method.

